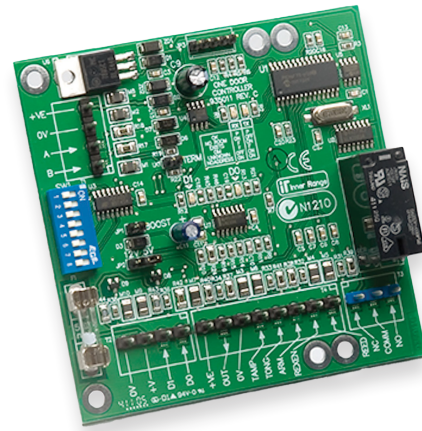


Designed as a cost-effective and space-saving single door module, this device is perfect for organisations that only require a small number of access control doors or where installation space is a premium.

The Single Door Access Module supports one door, one Wiegand card reader and the required inputs and outputs for the control and monitoring of a single door. A single auxiliary output is provided for use as a general purpose output or to control reader LEDs and/or buzzers, indicate "Door Open Too Long" (DOTL), or used for "Valid/Invalid" feedback.

Configuration options allow for a broad range of card reader technologies and support is provided for multiple card reader formats.

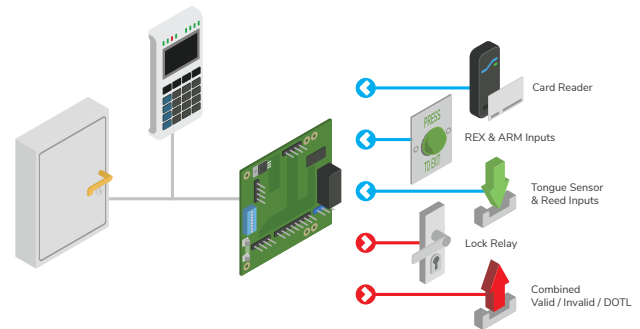


Features

- Supports magnetic swipe or Wiegand card readers without the need for an additional interface
- Provides reed and tongue sense monitoring
- Request to Enter (REN), Request to Exit (REX) & Arm inputs provided
- Door Open Too Long (DOTL), valid and invalid output
- On-board lock relay
- Fuse protection of reader power

Connectivity

The 1 Door Access Module is connected directly to the Controller RS-485 LAN.



Specifications

Controller Compatibility

Compatible with: Integrati

Physical

PCB Dimensions: 95(L) x 95(W) (mm)

Installation Environment: 0°C - 50°C @15 - 85% Relative humidity (non-condensing)

Electrical

Input Voltage to PCB: 11-14V DC (Typically from separate power supply)

Operational Current: 15mA

Max: 25mA with lock relay active. (NOT including Reader or Auxiliary Out current)

Fuse Protection: 500mA

Connections

Zone Inputs: 4 (May have predefined functions depending on programming options selected, i.e: Door Reed, REX/REN, Tongue Sense and Arm button)

Reader Ports: 1

Outputs: Relay 1 (Typically used for door locks)

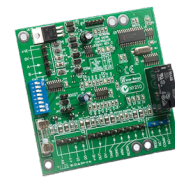
Auxiliary Outputs (open collector): 1 (Typically used for Valid/Invalid indication)

Compliance

Electrical 

Environmental 

Ordering Options



995011PCB&K
1 Door Access Module