

The background features a large, stylized logo for Multipath-IP. The letters 'M' and 'I' are rendered in a light gray, blocky font. The letter 'P' is significantly larger and rendered in a light pink color with a thin white outline. A pink circle is positioned above the 'I', connected to it by a thin pink line. The entire logo is set against a white background with a thin black border.

MULTIPATH-IP UPLOAD/DOWNLOAD

CROW RUNNER DIALLER

Version 1.2

Before You Begin

A High speed broadband Internet connection is recommended for use of the Multipath-IP upload/download feature. Using a mobile hotspot can introduce delays which may impact on the performance of the upload / download feature.

The latest version on the Multipath-IP client must be installed on the same machine as your panel software.

A com0com virtual COM port pair must be installed to link the Multipath-IP software and the panel software. Instructions on how to do this are at the end of this guide. For this guide we will be using ports 10 and 11.

A 300 baud Windows modem must be installed on one half of the virtual COM port pair. Instructions on how to do this are at the end of this guide. For consistency we recommend installing the modem on the higher port number.

Panel Setup

The Crow Runner must be programmed for remote access via telephone line. Program the panel for 2 rings to answer an incoming call. We recommend that Fax Defeat is not enabled. Please consult the Crow Runner installation manual for more detailed information.

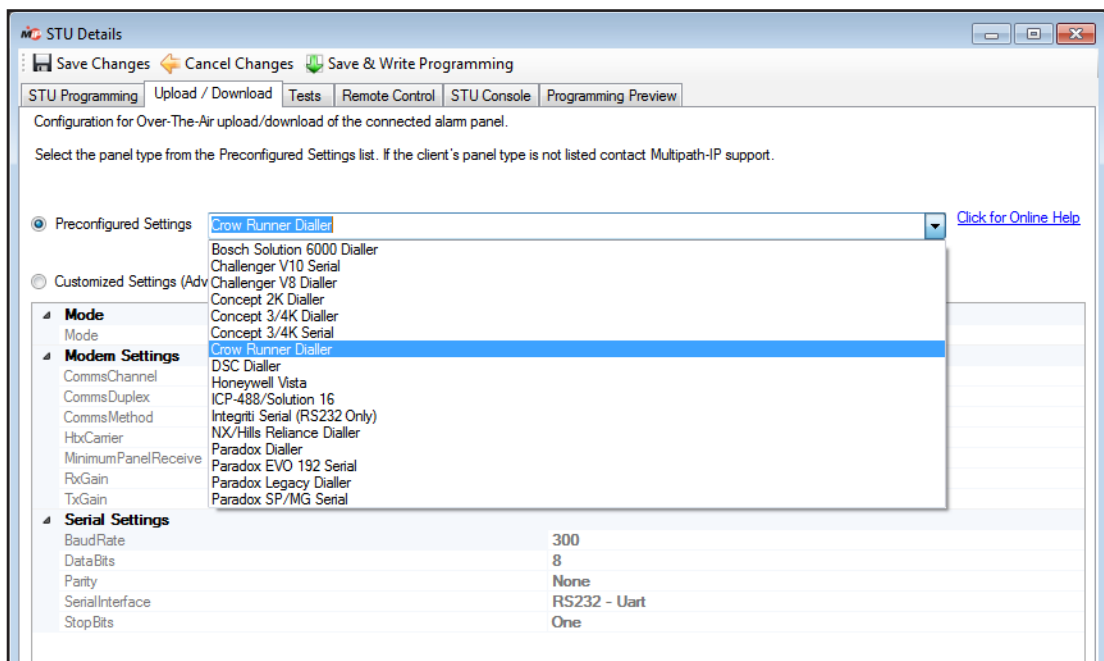
Multipath-IP Client setup

Log into your Multipath-IP Client Software using your Username and Password.

Select the T4000 to use from the main grid of the Monitored STUs section.

Status	Client Code	Serial Number	Model	Version	Bureau	Site Name	Plan	GSM Signal Strength
✓	56.0456	TM006503	T4000	3.7.0.2530	J.H Security	R&D Integriti Test - LH Controller	TC3DE - Class 3 Telstra Dua...	
✓	56.0599	TM020505	T4000 Lite	0.0.0.2567	C.N Security	Chris T4000 (DESK - Rev_G)	TC4DE - Class 4 Telstra Dua...	
▶	56.0654	TM000452	T4000	3.7.0.2530	Demonstration Bureau	Demo Account	TC3DE - Class 3 Telstra Dua...	
✓	56.0545	TM999005	T4000	3.7.0.2530	J.H Security	Nemtek test (Dan's desk)	TC3D - Class 3 Telstra Dual ...	
✓	56.0588	TM014414	T4000 Lite	3.7.0.2530	E.M Security	Paradox SP6000 Keyswitch	TC3D - Class 3 Telstra Dual ...	
✓	56.0590	TM014416	T4000 Lite	3.7.0.2530	E.M Security	Hills R128 Keyswitch	TC3D - Class 3 Telstra Dual ...	
✓	56.0572	TM999001	T4000	0.0.0.2540	E.M Security	Upload/Download Test	TC3D - Class 3 Telstra Dual ...	
⚠	88.8888	TM900179	T4000 Lite	0.0.0.2564	D.S Security	Ethernet Router Test	TC3DE - Class 3 Telstra Dua...	
⊘	56.0589	TM014415	T4000 Lite	3.7.0.2530	E.M Security	Bosch 6000 Keyswitch	TC3DES - Class 3 Telstra Du...	
⊘	56.0477	TM900180	T4000	0.0.0.2428	C.N Security	Chris T4000 (DESK - Rev_F)	TC3DE - Class 3 Telstra Dua...	
⊘	56.0647	TM020508	T4000 Lite	3.7.0.2530	123456 Security	Test Wall #2	TestMod3	

Double Click on the T4000 to open the STU details page. Go to the Upload/Download tab. From the Preconfigured Settings dropdown select Crow Runner Dialler.

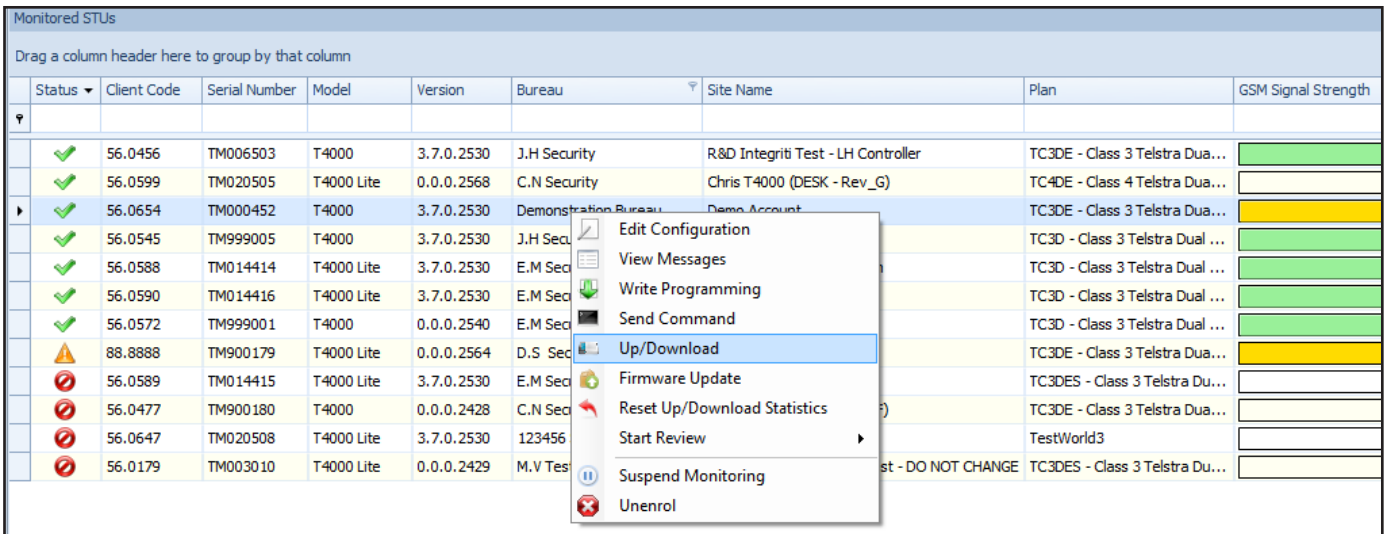


Click **Save & Write Programming** to push the changes to the T4000 immediately. If you just save changes they will be written to the T4000 the next time it polls in.

Close the STU details dialog.

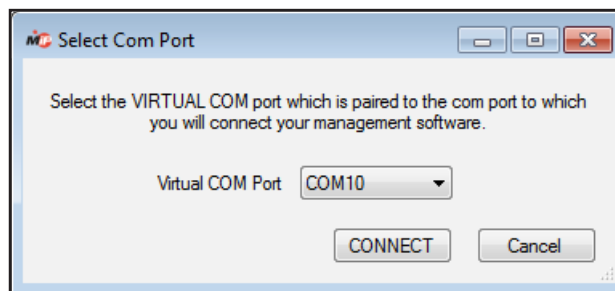
Initiating Upload Download

Right Click on the T4000 to use in the main grid of the Monitored STUs section. From the popup menu choose Upload / Download.

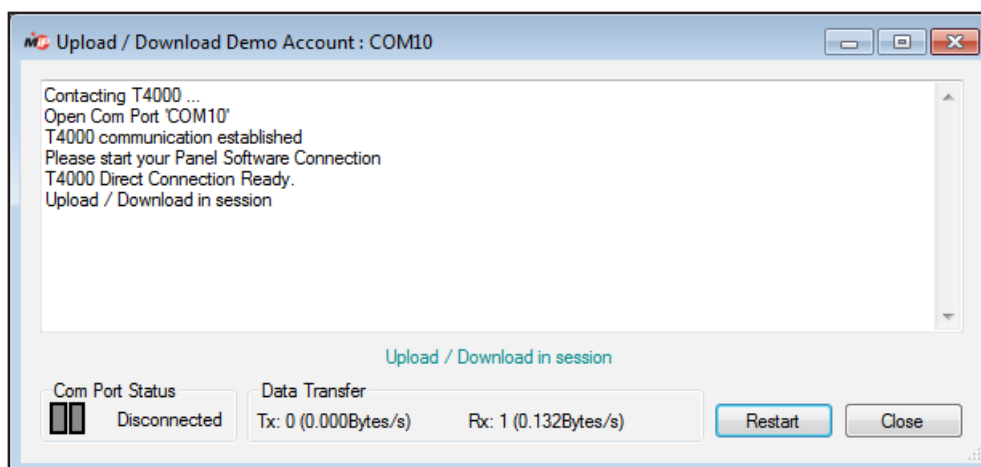


Status	Client Code	Serial Number	Model	Version	Bureau	Site Name	Plan	GSM Signal Strength
✓	56.0456	TM006503	T4000	3.7.0.2530	J.H Security	R&D Integrity Test - LH Controller	TC3DE - Class 3 Telstra Dua...	
✓	56.0599	TM020505	T4000 Lite	0.0.0.2568	C.N Security	Chris T4000 (DESK - Rev_G)	TC4DE - Class 4 Telstra Dua...	
▶	56.0654	TM000452	T4000	3.7.0.2530	Demonstration Bureau	Demo Account	TC3DE - Class 3 Telstra Dua...	
✓	56.0545	TM999005	T4000	3.7.0.2530	J.H Secu		TC3D - Class 3 Telstra Dual ...	
✓	56.0588	TM014414	T4000 Lite	3.7.0.2530	E.M Sec		TC3D - Class 3 Telstra Dual ...	
✓	56.0590	TM014416	T4000 Lite	3.7.0.2530	E.M Sec		TC3D - Class 3 Telstra Dual ...	
✓	56.0572	TM999001	T4000	0.0.0.2540	E.M Sec		TC3D - Class 3 Telstra Dual ...	
⚠	88.8888	TM900179	T4000 Lite	0.0.0.2564	D.S Sec		TC3DE - Class 3 Telstra Dua...	
✗	56.0589	TM014415	T4000 Lite	3.7.0.2530	E.M Sec		TC3DES - Class 3 Telstra Du...	
✗	56.0477	TM900180	T4000	0.0.0.2428	C.N Sec		TC3DE - Class 3 Telstra Dua...	
✗	56.0647	TM020508	T4000 Lite	3.7.0.2530	123456		TestWorld3	
✗	56.0179	TM003010	T4000 Lite	0.0.0.2429	M.V Tes		st - DO NOT CHANGE TC3DES - Class 3 Telstra Du...	

You will be prompted to select a COM port. Select one of the com0com virtual COM port pair ports and click Connect. This will be the COM port that **does not** have the modem installed on it.



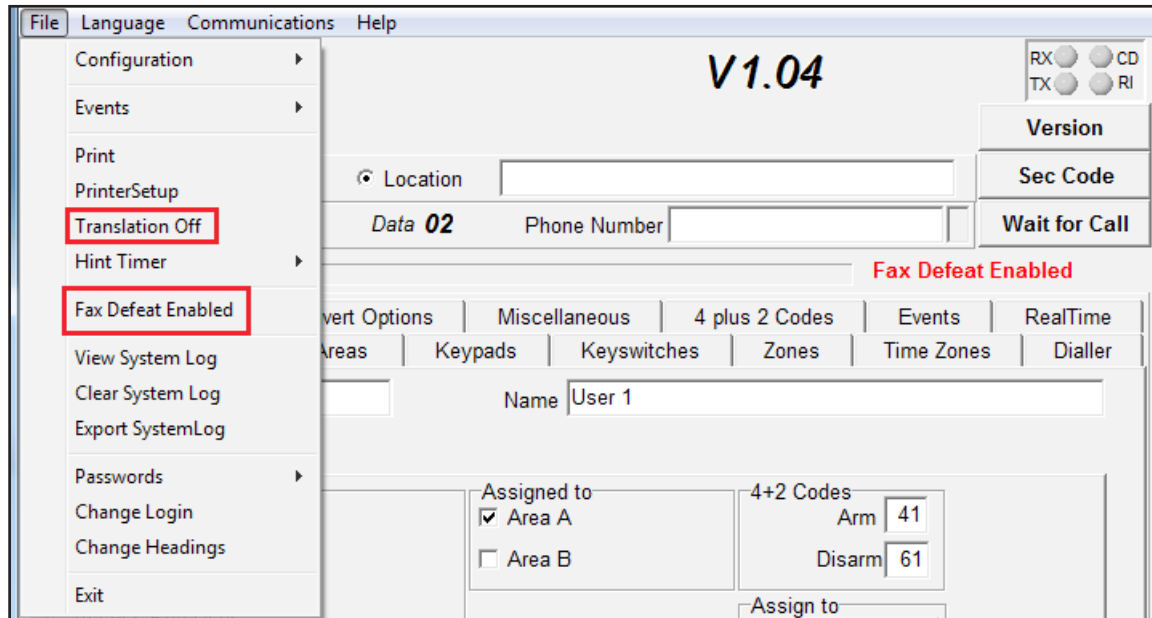
The Upload Download dialog will open and contact the T4000 starting the session. Once the phrase **Please start your Panel Software Connection** has been displayed you can open your panel software and initiate the connection to the panel.



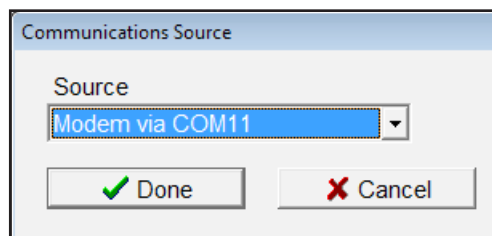
Panel Software Setup and Connection

Open the Crow Runner Software, this must be done after the upload/download connection has been started in the Multipath-IP client software.

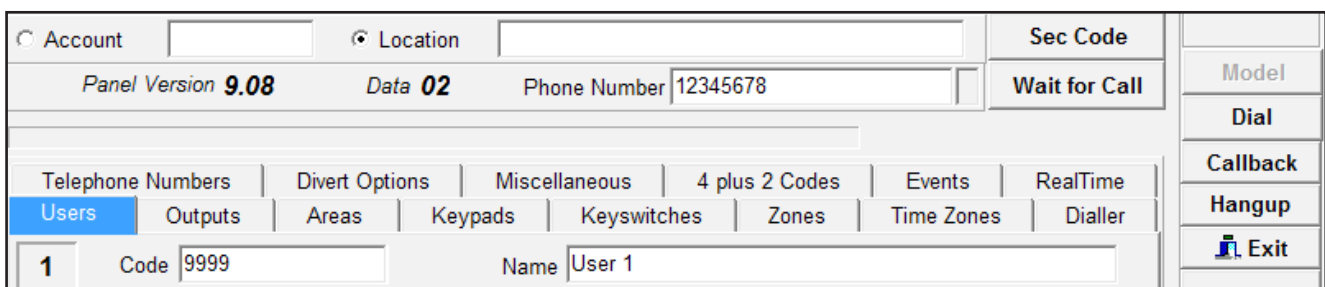
Go to File and click on Translation Off. We recommend that Fax Defeat is disabled.



Go to Communications > Source and set the Modem to the half of the COM port pair the modem is installed on e.g. COM 11.

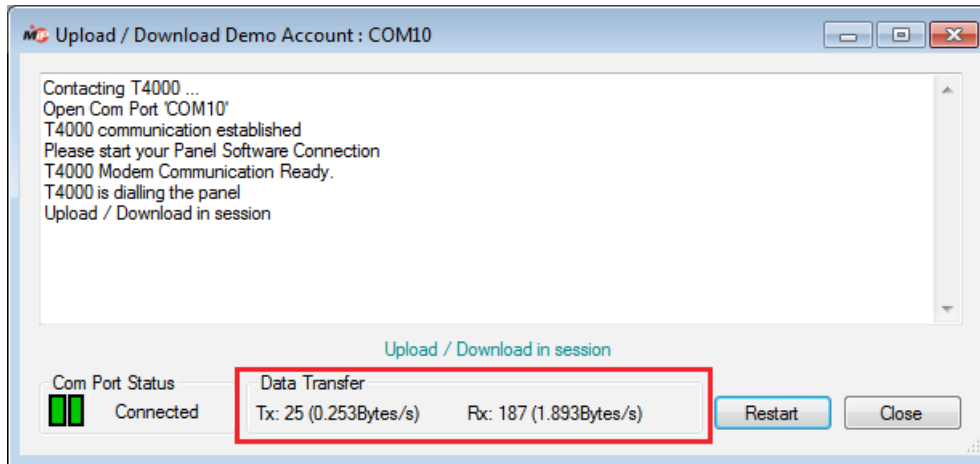


Enter a number in the Phone Number Field and click Dial to start the connection.



Verifying and closing Upload Download

Once the Panel software initiates its connection data will start to pass through the T4000. In the upload download window the Data Transfer Tx and Rx values will start to increase.



If you do not see any change in these values check the configuration of your Multipath-IP client and your Panel software.

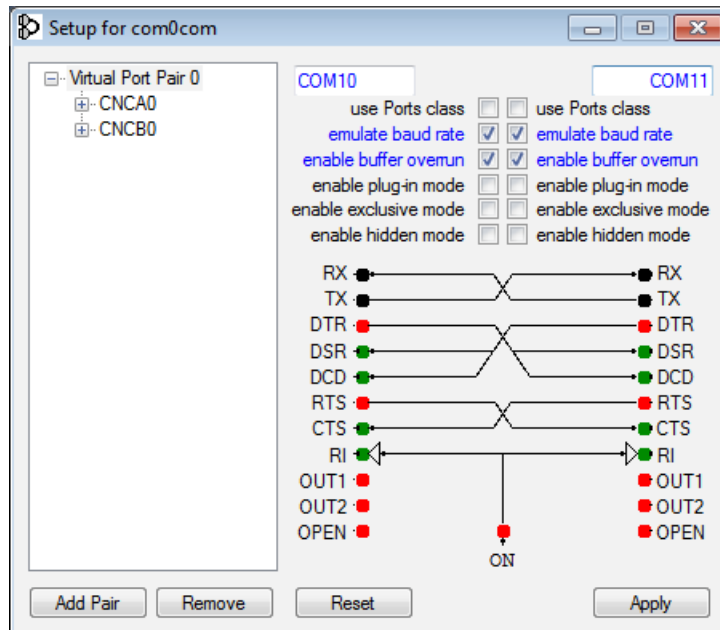
At the end of your upload download session disconnect your panel software as normal. Once the panel software has disconnected close the Multipath-IP upload download window.

com0com Setup



Open the com0com **setupg.exe** as an administrator. By default this will be installed in C:\Program Files (x86)\com0com

Click on Add Pair to create a new virtual COM port pair.



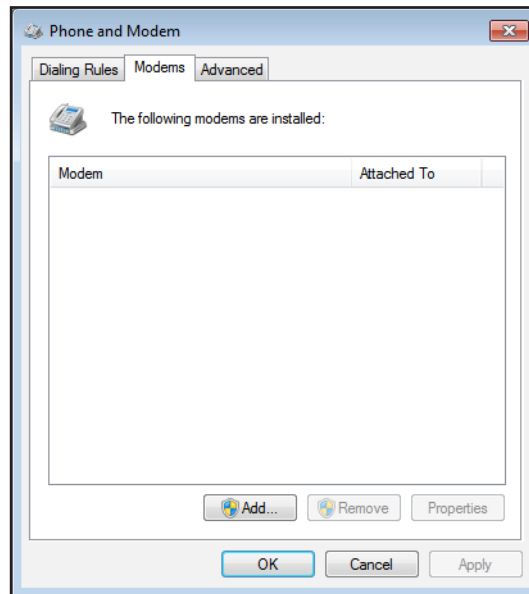
Once the pair is added they must be renamed as COM numbers. We recommend using COM10 and COM11, if these ports are already in use you can use different numbers.

Emulate Baud Rate and Enable Buffer Overrun must be enabled on both ports.

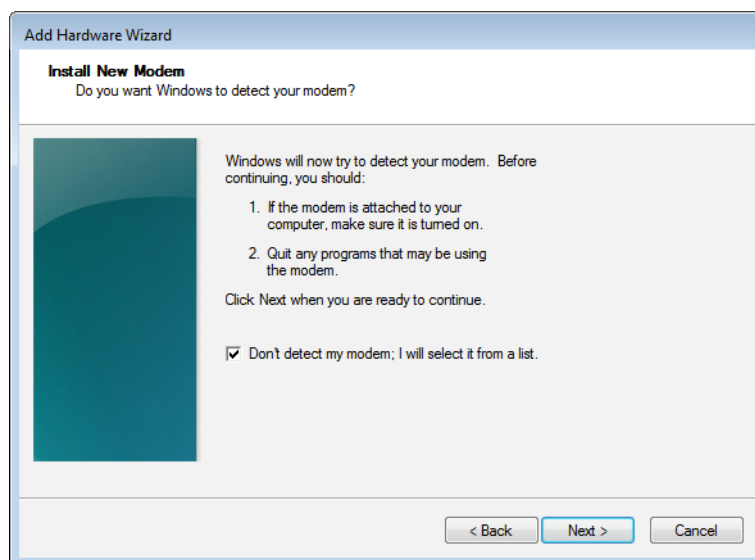
After these changes have been made click Apply. Once complete close the com0com setup.

Windows Modem Setup

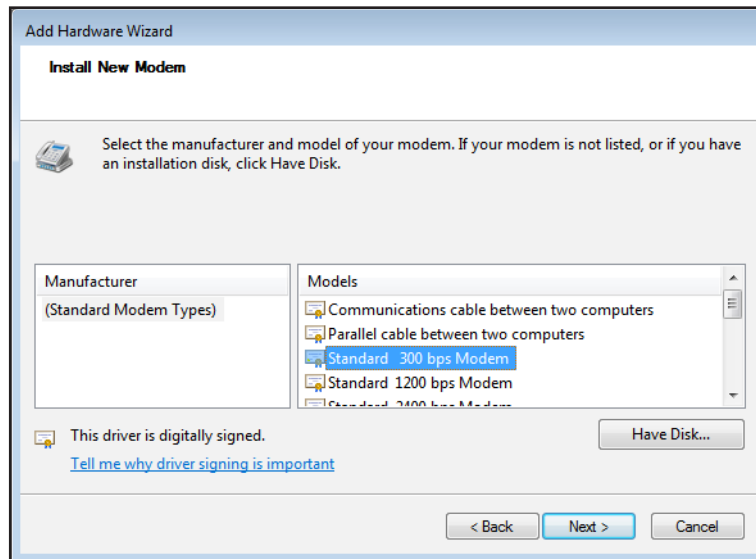
Open Windows Phone and Modem setup. This is accessible from Control Panel or searching from the start menu.



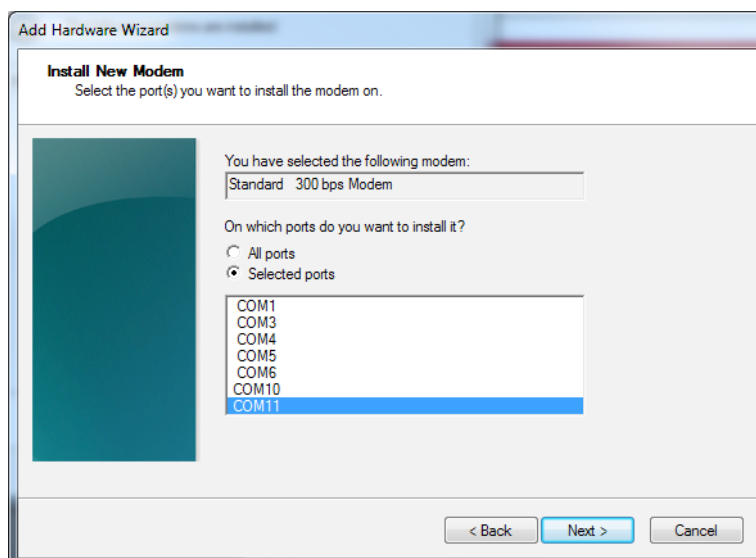
When prompted tick **Don't detect my modem; I will select it from a list.** Then click Next.



From the list of Models select the 300 baud Standard modem. Then click Next.



Select which port to install the modem on. This must be one of the com0com virtual COM port pair created earlier. For consistency we recommend using the higher port number for the modem.



Click the next button to install the modem and click Finish. Your new modem will now be displayed in the modem list.