



# MULTIPATH-IP UPLOAD/DOWNLOAD

---

CHALLENGER V8 DIALLER

Version 1.2

## Before You Begin

A High speed broadband Internet connection is recommended for use of the Multipath-IP upload/download feature. Using a mobile hotspot can introduce delays which may impact on the performance of the upload / download feature.

The latest version on the Multipath-IP client must be installed on the same machine as your panel software.

A com0com virtual COM port pair must be installed to link the Multipath-IP software and the panel software. Instructions on how to do this are at the end of this guide. For this guide we will be using ports 10 and 11.

A 300 baud Windows modem must be installed on one half of the virtual COM port pair. Instructions on how to do this are at the end of this guide. For consistency we recommend installing the modem on the higher port number.

## Panel Setup

The Challenger V8 must be programmed for remote access via telephone line. Below are basic settings that must be enabled. Please consult the Challenger V8 installation manual for more detailed information.

In the Communications Options set the Number of calls before answer to 1. Set the Number of Rings to 2. We recommend that answering machine defeat is turned off.

A Security Password must be programmed in the panel. Make a note of this as it will be required by the Titan software.

# Multipath-IP Client setup

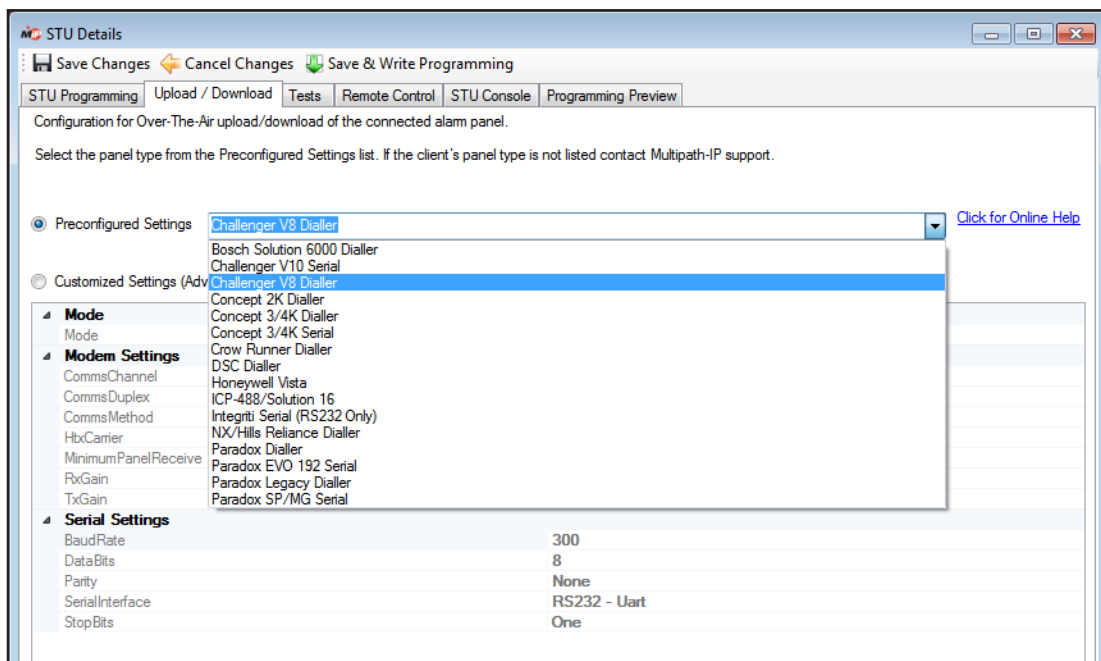


Log into your Multipath-IP Client Software using your Username and Password.

Select the T4000 to use from the main grid of the Monitored STUs section.

Status	Client Code	Serial Number	Model	Version	Bureau	Site Name	Plan	GSM Signal Strength
✓	56.0456	TM006503	T4000	3.7.0.2530	J.H Security	R&D Integriti Test - LH Controller	TC3DE - Class 3 Telstra Dua...	
✓	56.0599	TM020505	T4000 Lite	0.0.0.2567	C.N Security	Chris T4000 (DESK - Rev_G)	TC4DE - Class 4 Telstra Dua...	
▶	56.0654	TM000452	T4000	3.7.0.2530	Demonstration Bureau	Demo Account	TC3DE - Class 3 Telstra Dua...	
✓	56.0545	TM999005	T4000	3.7.0.2530	J.H Security	Nemtek test (Dan's desk)	TC3D - Class 3 Telstra Dual ...	
✓	56.0588	TM014414	T4000 Lite	3.7.0.2530	E.M Security	Paradox SP6000 Keyswitch	TC3D - Class 3 Telstra Dual ...	
✓	56.0590	TM014416	T4000 Lite	3.7.0.2530	E.M Security	Hills R128 Keyswitch	TC3D - Class 3 Telstra Dual ...	
✓	56.0572	TM999001	T4000	0.0.0.2540	E.M Security	Upload/Download Test	TC3D - Class 3 Telstra Dual ...	
⚠	88.8888	TM900179	T4000 Lite	0.0.0.2564	D.S Security	Ethernet Router Test	TC3DE - Class 3 Telstra Dua...	
⊘	56.0589	TM014415	T4000 Lite	3.7.0.2530	E.M Security	Bosch 6000 Keyswitch	TC3DES - Class 3 Telstra Du...	
⊘	56.0477	TM900180	T4000	0.0.0.2428	C.N Security	Chris T4000 (DESK - Rev_F)	TC3DE - Class 3 Telstra Dua...	
⊘	56.0647	TM020508	T4000 Lite	3.7.0.2530	123456 Security	Test Wall #2	Test/Wodd3	

Double Click on the T4000 to open the STU details page. Go to the Upload/Download tab. From the Preconfigured Settings dropdown select Challenger V8 Dialler.

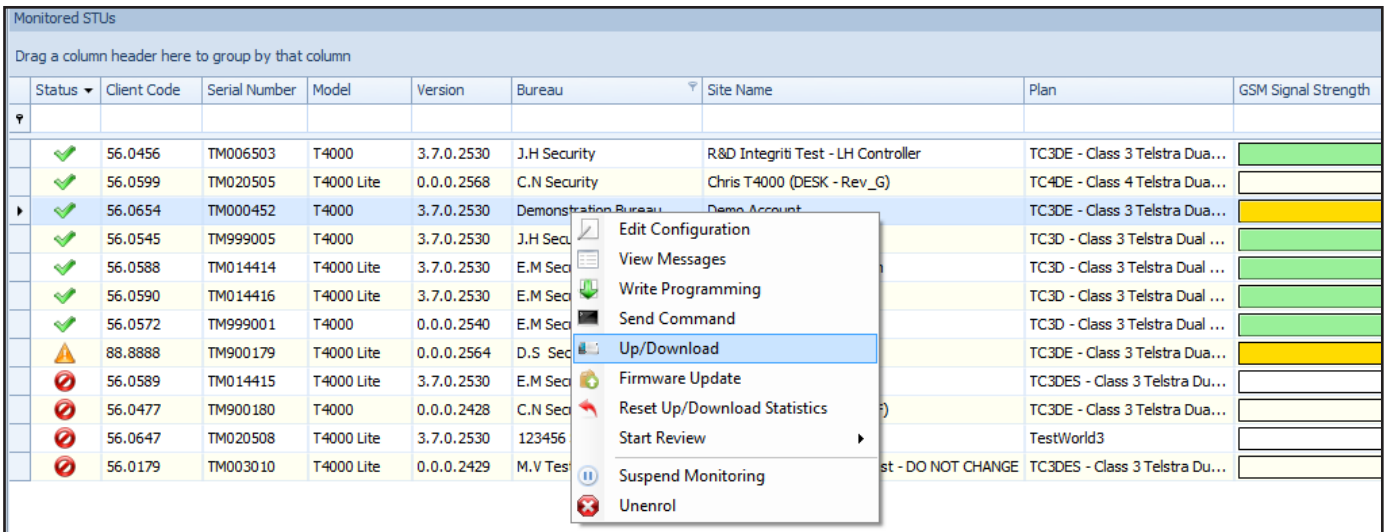


Click **Save & Write Programming** to push the changes to the T4000 immediately. If you just save changes they will be written to the T4000 the next time it polls in.

Close the STU details dialog.

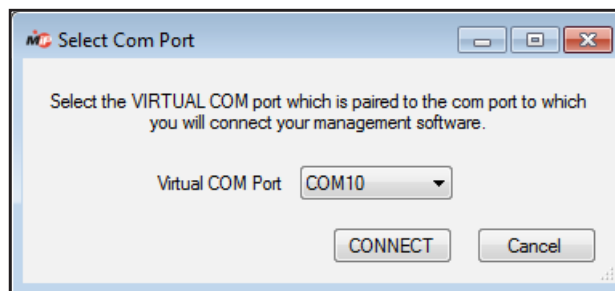
## Initiating Upload Download

Right Click on the T4000 to use in the main grid of the Monitored STUs section. From the pop-up menu choose Upload / Download.

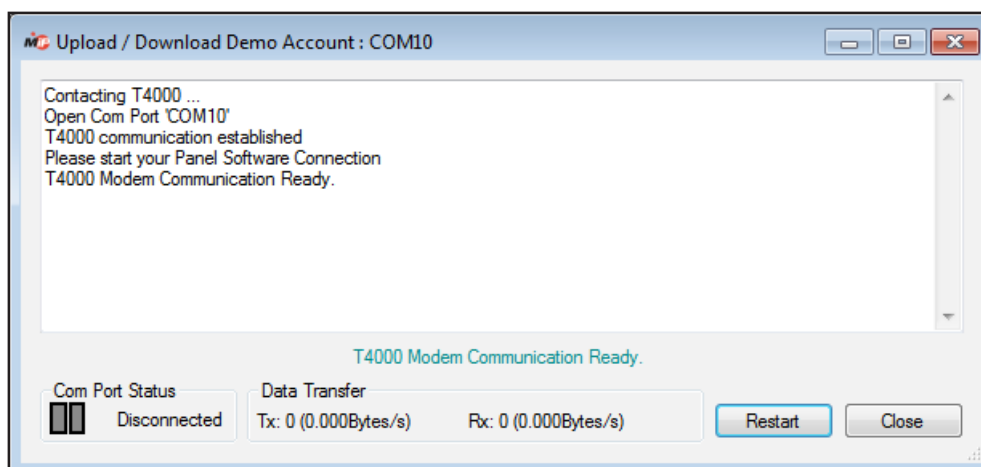


Status	Client Code	Serial Number	Model	Version	Bureau	Site Name	Plan	GSM Signal Strength
✓	56.0456	TM006503	T4000	3.7.0.2530	J.H Security	R&D Integrity Test - LH Controller	TC3DE - Class 3 Telstra Dua...	
✓	56.0599	TM020505	T4000 Lite	0.0.0.2568	C.N Security	Chris T4000 (DESK - Rev_G)	TC4DE - Class 4 Telstra Dua...	
▶	56.0654	TM000452	T4000	3.7.0.2530	Demonstration Bureau	Demo Account	TC3DE - Class 3 Telstra Dua...	
✓	56.0545	TM999005	T4000	3.7.0.2530	J.H Secu		TC3D - Class 3 Telstra Dual ...	
✓	56.0588	TM014414	T4000 Lite	3.7.0.2530	E.M Sec		TC3D - Class 3 Telstra Dual ...	
✓	56.0590	TM014416	T4000 Lite	3.7.0.2530	E.M Sec		TC3D - Class 3 Telstra Dual ...	
✓	56.0572	TM999001	T4000	0.0.0.2540	E.M Sec		TC3D - Class 3 Telstra Dual ...	
⚠	88.8888	TM900179	T4000 Lite	0.0.0.2564	D.S Sec		TC3DE - Class 3 Telstra Dua...	
✗	56.0589	TM014415	T4000 Lite	3.7.0.2530	E.M Sec		TC3DES - Class 3 Telstra Du...	
✗	56.0477	TM900180	T4000	0.0.0.2428	C.N Sec		TC3DE - Class 3 Telstra Dua...	
✗	56.0647	TM020508	T4000 Lite	3.7.0.2530	123456		TestWorld3	
✗	56.0179	TM003010	T4000 Lite	0.0.0.2429	M.V Tes		st - DO NOT CHANGE TC3DES - Class 3 Telstra Du...	

You will be prompted to select a COM port. Select one of the com0com virtual COM port pair ports and click Connect. This will be the COM port that **does not** have the modem installed on it.



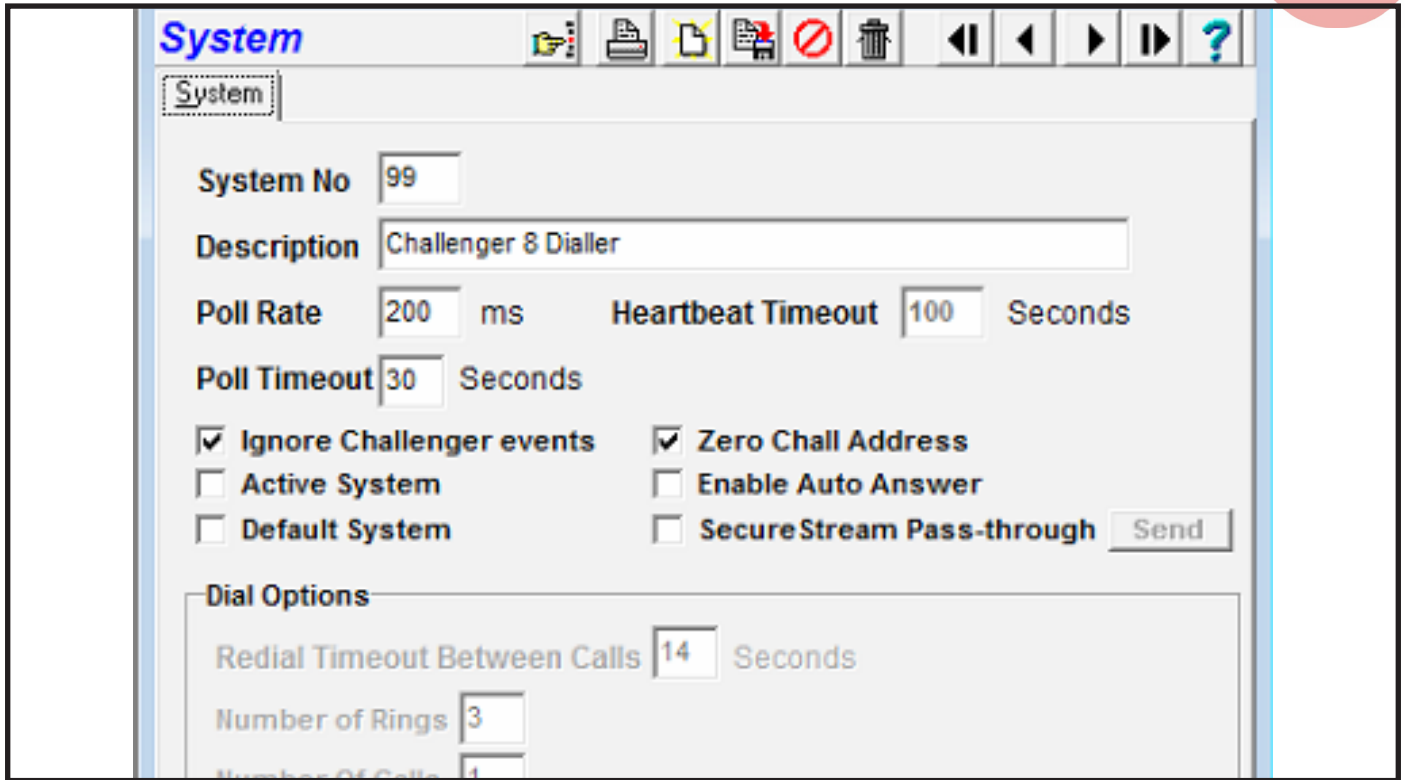
The Upload Download dialog will open and contact the T4000 starting the session. Once the phrase **Please start your Panel Software Connection** has been displayed you can open your panel software and initiate the connection to the panel.



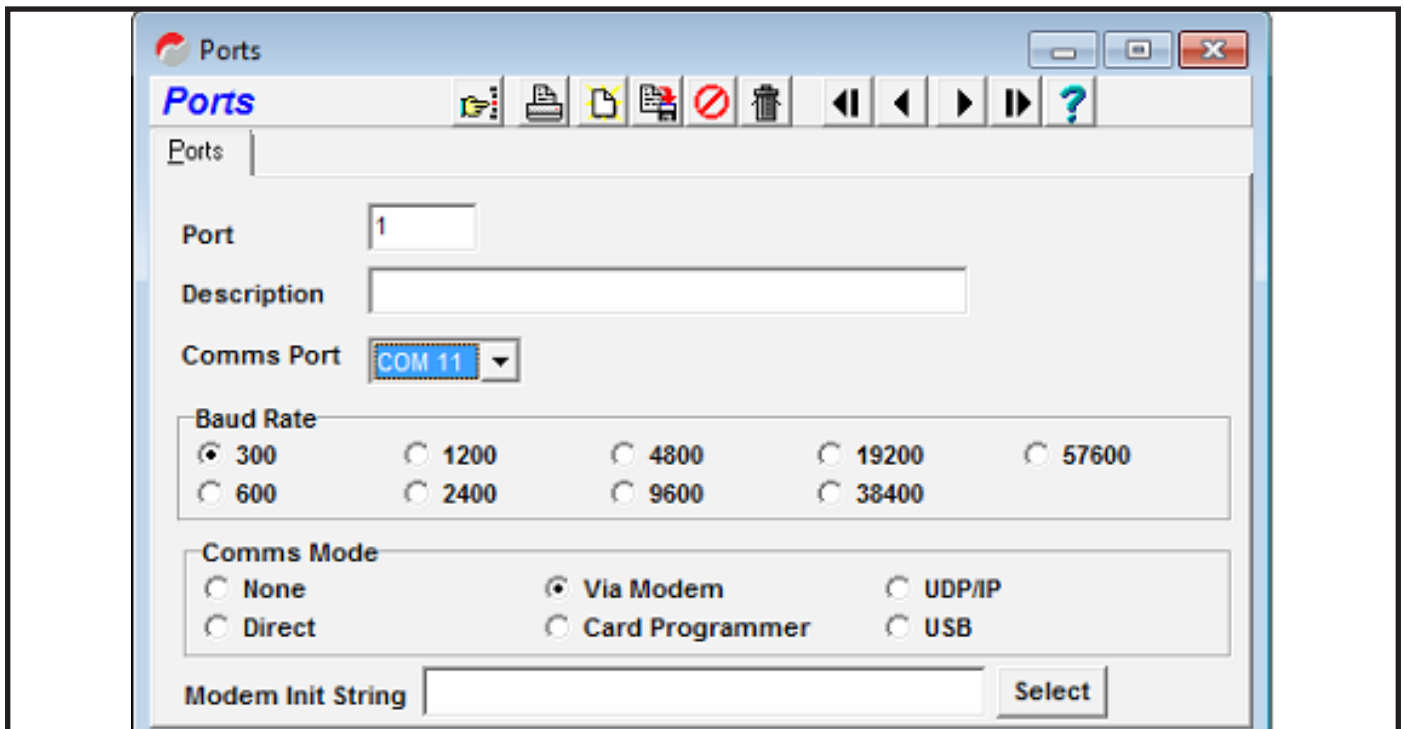
# Panel Software Setup and Connection



Deactivate your System in the Titan Software if it is active and flag Zero Challenger Address



In the Admin>Ports menu, set the Comms Port to the applicable Port e.g COM11. Flag 300 in the Baud Rate field, set the Comms Mode to Via Modem and set the Modem Init String to not used as it is ignored by the T4000. Click Save and close this Window.



In the Admin > Challenger menu ensure the Port is set to the same Port number you are using for this Modem Setup. E.g Port 1 displayed below is pointing to the Port 1 that was created as pictured above. Be sure to check the Security Password is correct, you have set a number in the Phone Number field, you have set the Mode to Multi-Ring and all other applicable fields such as Description have been filled in. Click Save then close this Window.

**Challenger**

Challenger | Options

Type: Challenger V8  IUM installed

Challenger No: 1 Security Password: 0000000000

Description:

Location:

Phone: 12345678

Route:  Port: 1 Address: 1

**Mode**

None  Call Back

Direct  UDP/IP

Multi-Ring  USB

**Cycle**

Once  4 Hourly  Weekly

Hourly  Daily

Connect Date:  Time:  Duration:

SecureStream Pass-through

At this point you can now flag Active System. Once the Modem Status shows Modem OK click Dial to start the connection to the panel.

System No:

Description: Challenger & Dialler

Poll Rate: 200 ms Heartbeat Timeout: 100 Seconds

Poll Timeout: 30 Seconds

Ignore Challenger events  Zero Chall Address

Active System  Enable Auto Answer

Default System  SecureStream Pass-through

**Dial Options**

Redial Timeout Between Calls: 14 Seconds

Number of Rings: 2

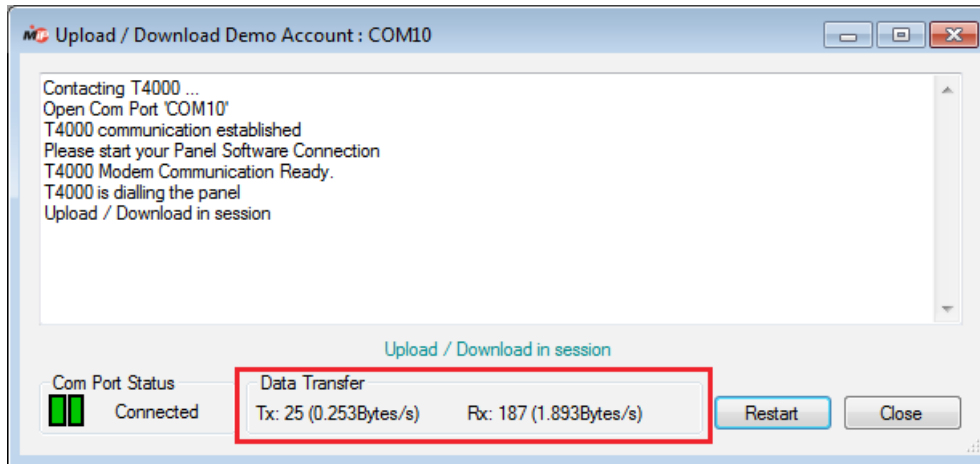
Number Of Calls: 1

Answering Machine Defeat

Modem Status: MODEM OK

## Verifying and closing Upload Download

Once the Panel software initiates its connection data will start to pass through the T4000. In the upload download window the Data Transfer Tx and Rx values will start to increase.



If you do not see any change in these values check the configuration of your Multipath-IP client and your Panel software.

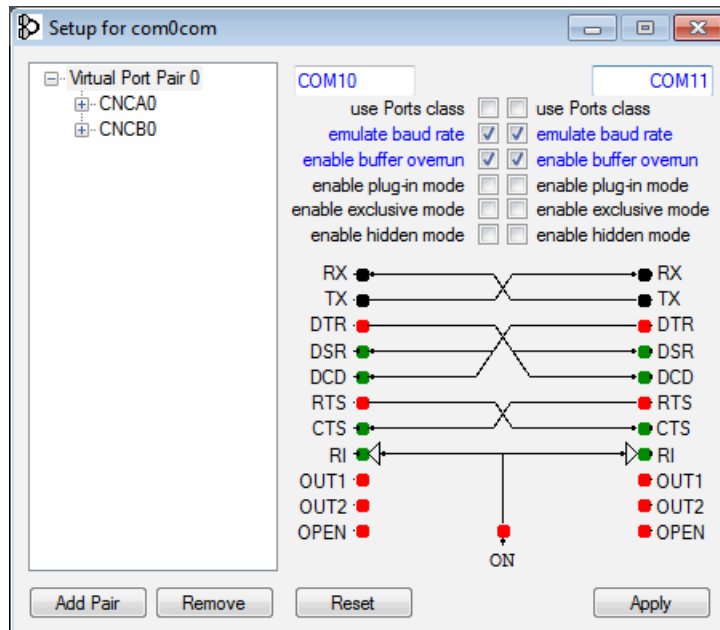
At the end of your upload download session disconnect your panel software as normal. Once the panel software has disconnected close the Multipath-IP upload download window.

## com0com Setup



Open the com0com **setupg.exe** as an administrator. By default this will be installed in C:\Program Files (x86)\com0com

Click on Add Pair to create a new virtual COM port pair.



Once the pair is added they must be renamed as COM numbers. We recommend using COM10 and COM11, if these ports are already in use you can use different numbers.

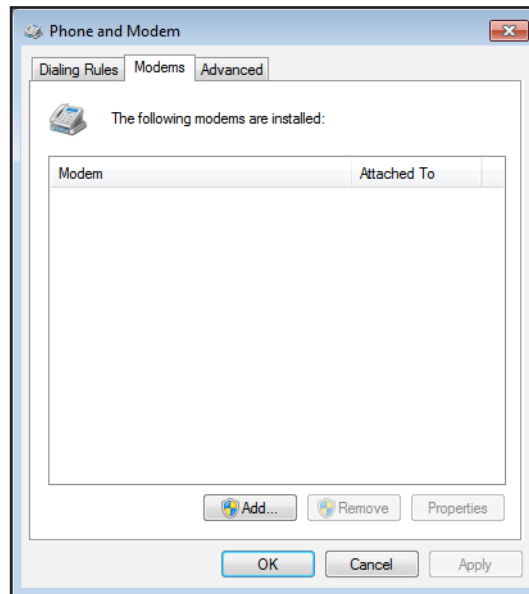
Emulate Baud Rate and Enable Buffer Overrun must be enabled on both ports.

After these changes have been made click Apply. Once complete close the com0com setup.

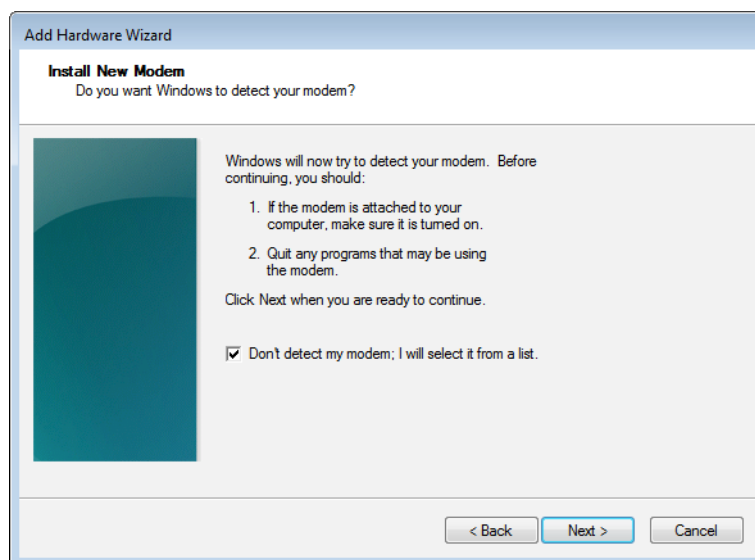


# Windows Modem Setup

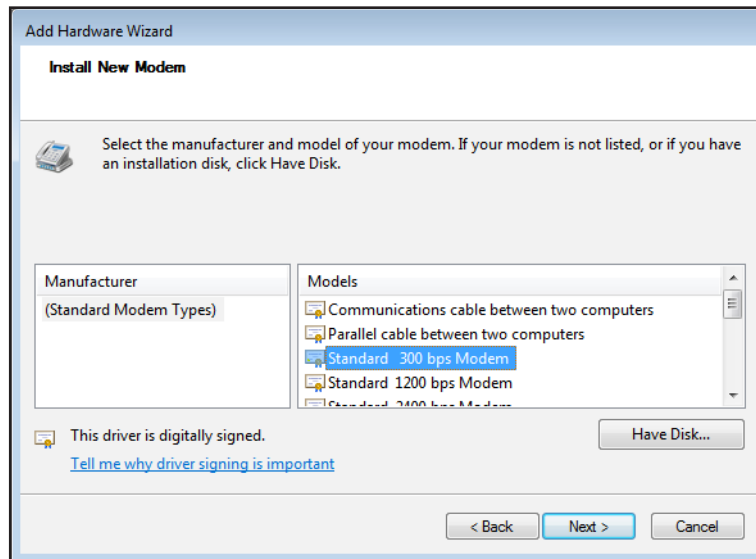
Open Windows Phone and Modem setup. This is accessible from Control Panel or searching from the start menu.



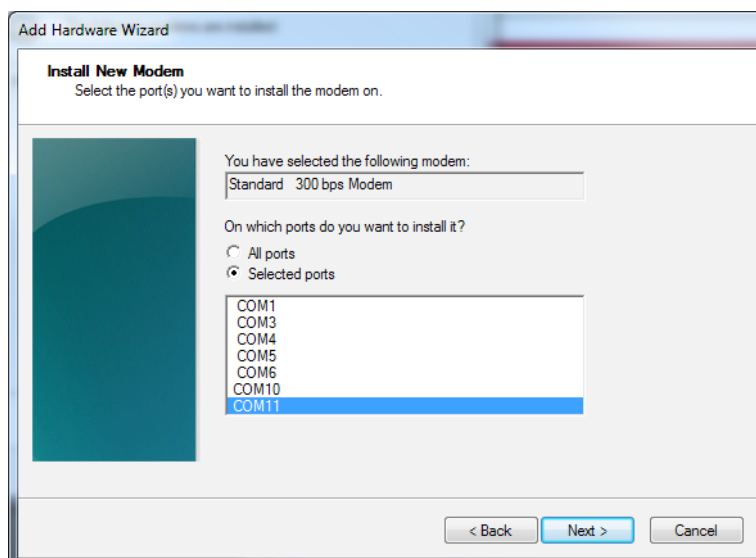
When prompted tick **Don't detect my modem; I will select it from a list.** Then click Next.



From the list of Models select the 300 baud Standard modem. Then click Next.



Select which port to install the modem on. This must be one of the com0com virtual COM port pair created earlier. For consistency we recommend using the higher port number for the modem.



Click the next button to install the modem and click Finish. Your new modem will now be displayed in the modem list.